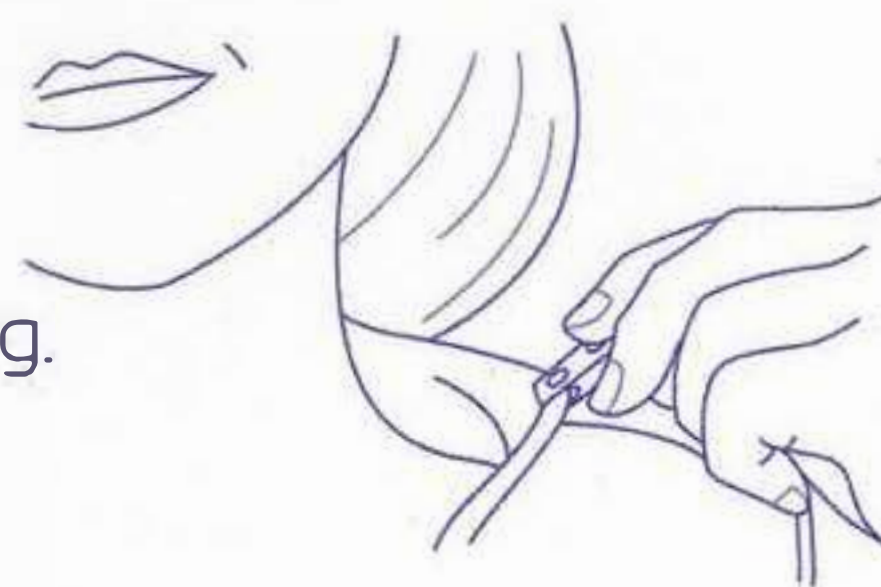


Oxy-Breather Instructions and Use

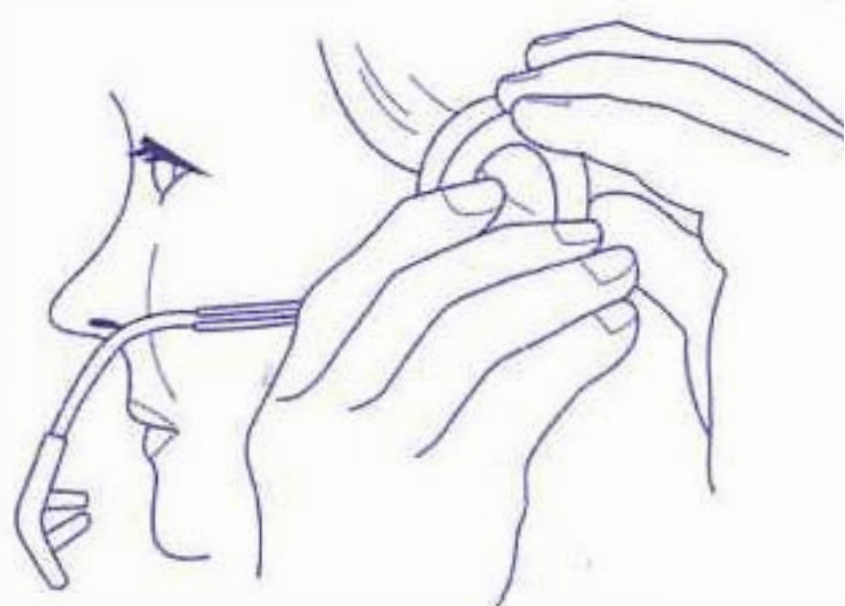
STEP 1:
Hold the **EARPIECE** and **SUPPORT ARM** in your **RIGHT** hand and drape the tubing over your **LEFT** shoulder.



STEP 2:
Attach the **TUBING CLIP** to your clothing. You can attach it to the front or back depending on your preference.




STEP 3:
Place the **EARPIECE** over your **LEFT** ear. Custom fit to your ear by squeezing or widening the earpiece.



STEP 4:
Insert **NASAL PRONGS** into nose. You may bend the nosepiece to insert the prongs into your nose. When released, they will gently hug the inside of your nose.



 **OXY-TECH**
1033 E. Wagon Wheel Drive
Phoenix, AZ 85020 USA

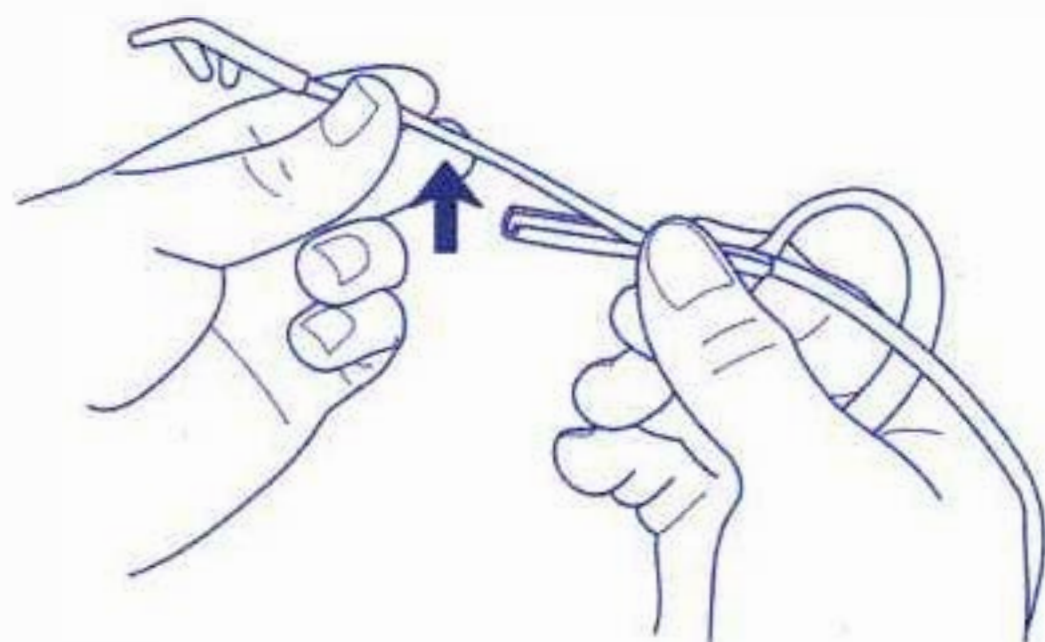


CAUTION: Use of sterilization or cleaning solutions may render this device nonfunctional

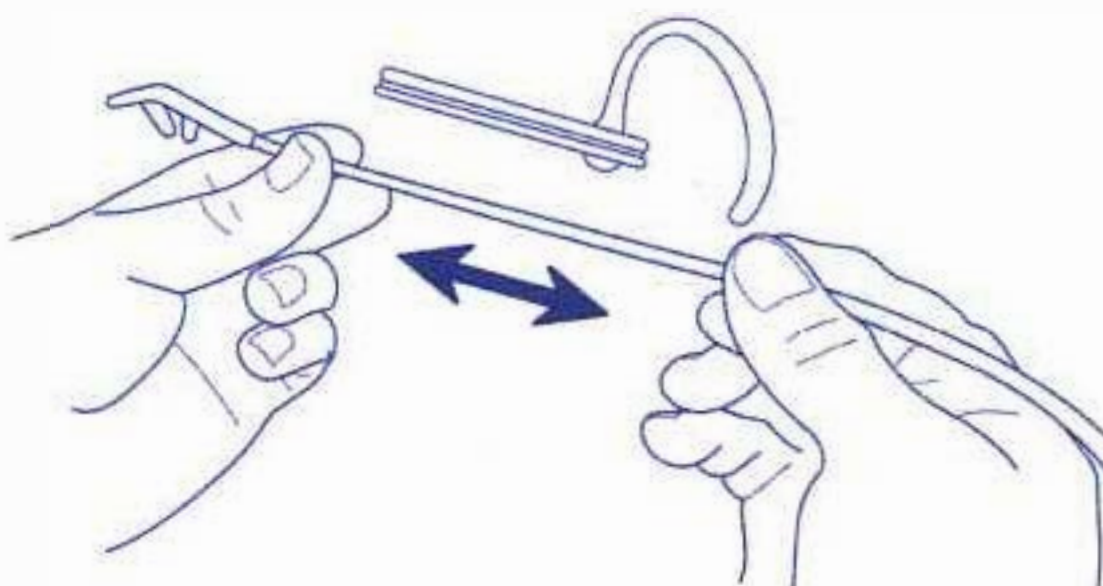
Fine-Tuning Your Fit

If your Oxy-Breather sags, feels too tight, or appears uneven across your face, it may be necessary to adjust the length of the tubing leading from the support arm to your nose.

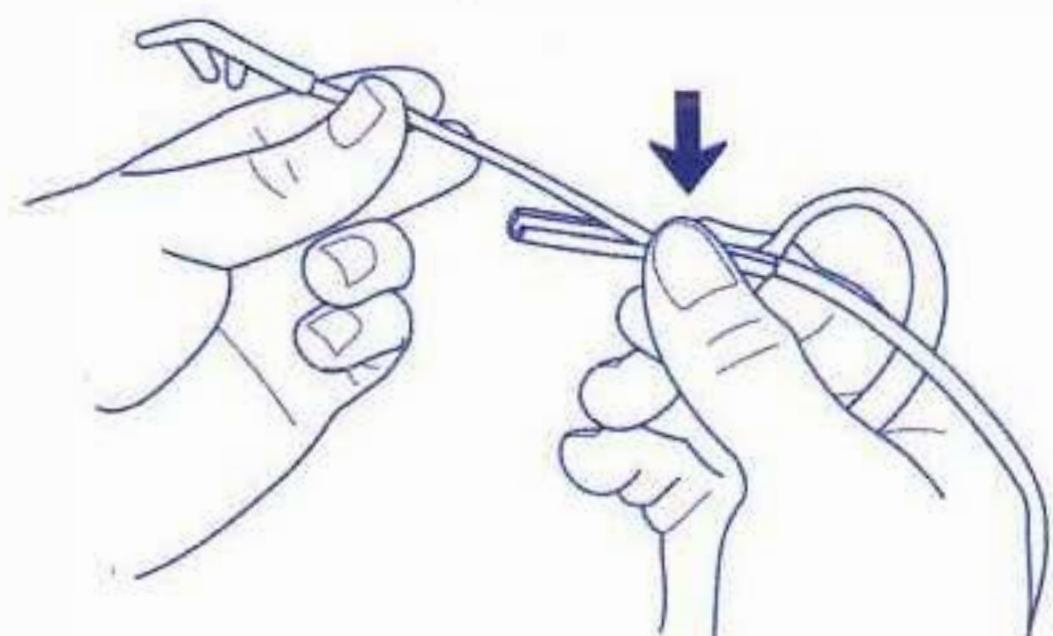
STEP 1:
Gently pull up on the tubing to pull it out from the groove holding it in the support arm



STEP 2:
Move the cannula up or down the support arm to shorten or lengthen the hose



STEP 3:
Re-insert the cannula tubing into the open groove on the support arm at desired length



NOTE: It may be necessary to repeat these steps several times before you find your ideal fit.

 **OXY-TECH**
1033 E. Wagon Wheel Drive
Phoenix, AZ 85020 USA



CAUTION: Use of sterilization or cleaning solutions may render this device nonfunctional

www.oxy-tech.com/instructions