



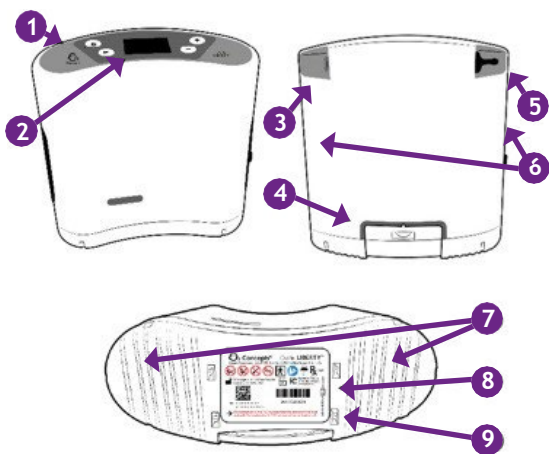
Oxlife **LIBERTY**<sup>®</sup>

Oxlife **LIBERTY**<sub>2</sub><sup>®</sup>

# Quick Reference Guide

This guide is intended to be a quick reference only. For complete user instructions, please refer to the user manual.

- **DO NOT** smoke when using this device. Keep all matches, lit cigarettes, candles and other sources of ignition at least 10 feet from the device.
- **DO NOT** use the Oxlife **LIBERTY**<sup>®</sup> without a battery installed.
- Place the Oxlife **LIBERTY** in a well-ventilated area free of smoke and away from direct sunlight.
- Always use the manufacturer-supplied carry bag with the device to protect from damage. Ensure that air intake ports are not obstructed.



## Feature Identification

- 1 Control Panel
- 2 LCD Display
- 3 External Power Input
- 4 Rechargeable Battery
- 5 Oxygen Outlet Port
- 6 Air Inlet Ports
- 7 Exhaust Ports
- 8 Device Serial Number
- 9 FAA Approval Statement

To view a brief, introductory video on your device and access the user manual, please visit: [o2-concepts.com/products](https://o2-concepts.com/products)

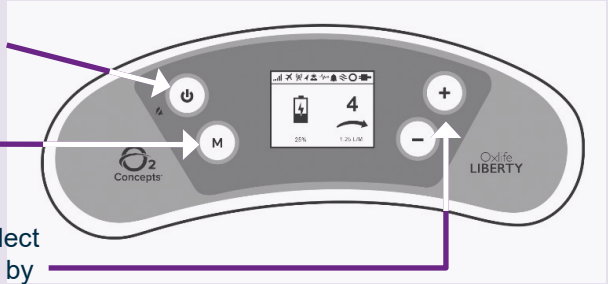
---

## Device Settings

Press and hold the **power button** to turn the device on/off.

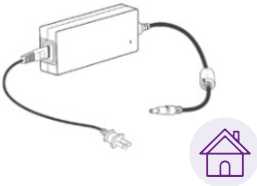
Press the **(M) button** to select Continuous or Pulse flow mode.

Press the **(+) or (-) buttons** to select the correct setting as prescribed by your physician or healthcare provider.



---

## External Power



### AC Power Supply

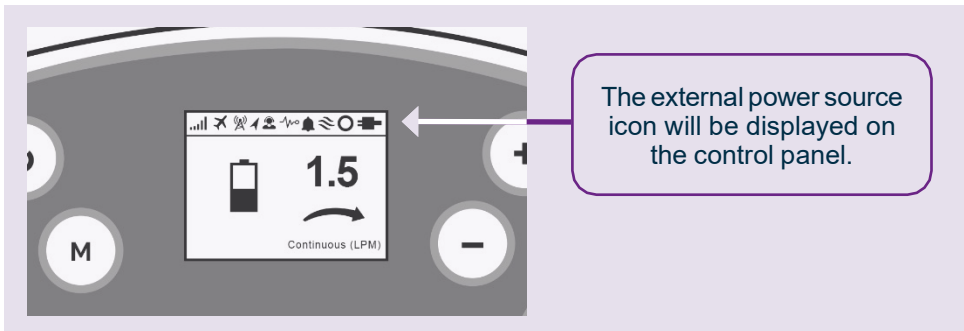
To use the AC power supply, connect the power supply to the Oxlife **LIBERTY** and wall outlet. The external power source icon will be displayed on the control panel.



### DC Power Cord

To use DC power, connect the DC power cord to the Oxlife **LIBERTY** and then to the 12/15 Volt DC outlet in the vehicle.

**Always have the vehicle's engine running before plugging in your Oxlife LIBERTY.**



The external power source icon will be displayed on the control panel.

---

## Installing/Removing Battery

**To remove battery**, depress button and slide battery toward you.

**To install battery**, align battery (with the connector facing up) to the device battery bay. Slide until battery clicks into place.



Do not force the battery into place. The battery and/or device can be damaged if improperly aligned.



---

## Battery Time Management

When connected to external power, a lightning bolt indicates the battery is charging.

While operating the device on battery power, when the charge status decreases to 30%, the battery's remaining charge percent will be displayed.

With the combined use of the battery, AC power supply and DC power cord, you may extend your time away from home. Using AC and DC power, when possible, will preserve battery life.

Battery charge status is displayed here.



---

## Typical Battery Operating Times

CONTINUOUS MODE SETTINGS	OPERATING TIME HOURS
0.5	2.25
0.75	2.25
1.0	1.75
1.25	1.50
1.5	1.25
1.75*	1.00
2.0*	0.90

PULSE MODE SETTINGS	OPERATING TIME HOURS
1	3.00
2	2.75
3	2.50
4	2.00
5	1.75
6	1.50
7	1.30
8	1.10
9	1.10
10*	1.00

\*Continuous Mode settings 1.75 and 2.0 and Pulse Mode setting 10 are only available with the Oxlife LIBERTY2® device. Battery operating times are based on a new, fully charged battery and are  $\pm 10\%$ . Battery operating time will degrade with battery age, number of charge cycles and operating environment.

---

## Cleaning the Side Vents

It is recommended to clean the side vents weekly following these directions:

- 1 Remove the side vent.
- 2 Wash the side vent under warm running tap water using a mild detergent.
- 3 Rinse thoroughly.
- 4 Tap the side vent on a counter or hard surface several times to remove excess water and blot with paper towel to dry completely.
- 5 Reinsert into the device. Never use your Oxlife LIBERTY without side vents installed.

